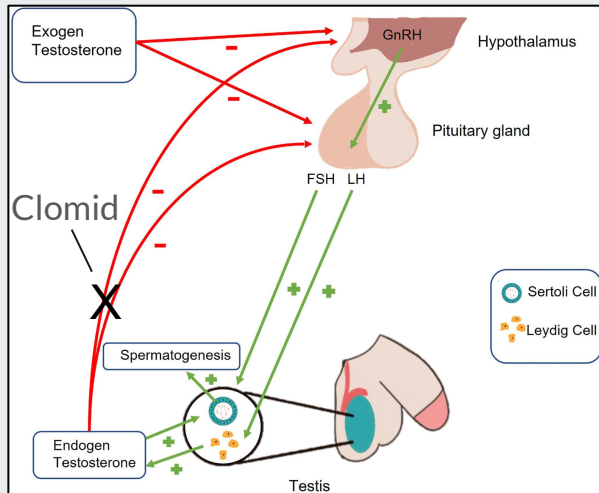


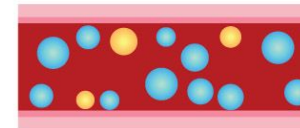
Clomiphene Citrate Therapy Effects on Lipid Panels in Men with Hypogonadism

Siddiqui, Ahsan¹ BS; Pereira, Thairo A. MD²; Bernie, Helen L. DO, MPH²
¹Indiana University School of Medicine; ²Indiana University Department of Urology

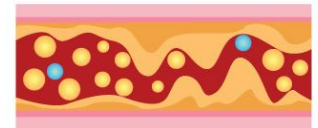


Therapeutic Effect of Clomiphene Citrate

- Improve TT production
- Improve Fertility



Normal Artery



Artery Narrowed

Methods and Data

- Retrospective Chart review
- Labs before and 4 weeks after Starting Therapy
- 52 men
 - Mean age 42.4
- Paired T-Test

| | Pre-CC Mean ± SD | Post-CC Mean ± SD | Pre-CC Range | Post-CC Range | P-Value (n = 52) |
|----------------------------|------------------|-------------------|--------------|---------------|------------------|
| Total Cholesterol (mg/dL) | 172.4 ± 33.6 | 171.5 ± 33.8 | 89-253 | 99-247 | 0.783 |
| Triglycerides (mg/dL) | 142 ± 71.2 | 141 ± 77.5 | 41-330 | 44-380 | 0.903 |
| HDL (mg/dL) | 43.3 ± 10.0 | 40.1 ± 10.2 | 31-77 | 21-73 | <0.001 |
| LDL (mg/dL) | 101 ± 29.8 | 103 ± 32.7 | 28 - 163 | 42 - 174 | 0.447 |
| Total Testosterone (ng/dL) | 320 ± 233 | 501 ± 207 | 23 - 1349 | 55 - 1024 | <0.001 |
| Free Testosterone (pg/mL) | 60.0 ± 35.2 | 98.4 ± 50.5 | 4.7 - 216 | 6.4 - 213 | <0.001 |
| FSH (mIU/mL) | 10.2 ± 9.8 | 12.2 ± 10.9 | 1.5 - 44.9 | 1.1 - 59.1 | 0.129 |
| LH (mIU/mL) | 6.11 ± 4.13 | 8.71 ± 7.00 | 1.3 - 22.3 | 1 - 37.2 | 0.00234 |
| SHBG (nmol/L) | 23.4 ± 7.79 | 27.3 ± 9.65 | 10 - 48 | 6 - 53 | <0.001 |
| Prolactin (ng/mL) | 7.80 ± 3.17 | 7.80 ± 3.25 | 2 - 21.8 | 1.3 - 19.3 | 0.996 |
| Estradiol (pg/mL) | 29.7 ± 23.8 | 42.4 ± 28.5 | 10 - 164 | 15 - 214 | <0.001 |
| Hemoglobin (g/dL) | 14.6 ± 1.11 | 14.6 ± 1.17 | 37.1 - 49.4 | 37 - 51.8 | 0.921 |
| Hematocrit (%) | 43.3 ± 3.25 | 43.312 ± 3.35 | 37.1 - 49.4 | 37 - 51.8 | 1 |
| PSA (ng/dL) | 0.717 ± 0.570 | 0.824 ± 0.700 | 0.008 - 3.5 | 0.008 - 3.96 | 0.023 |
| HbA1c (%) | 5.77 ± 1.21 | 5.66 ± 0.538 | 4.6 - 13.7 | 4.5 - 7 | 0.44 |

Discussion

- Marked decrease in HDL
- Lipid profile monitoring
- Risk factors
 - History of CVD
 - Obesity
 - HTN
 - Old age
- Alternative therapies
- Further research on long term therapy

Clomiphene Citrate

